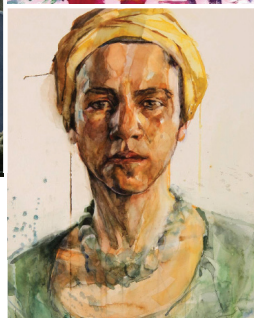
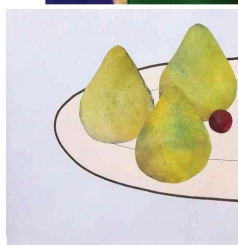
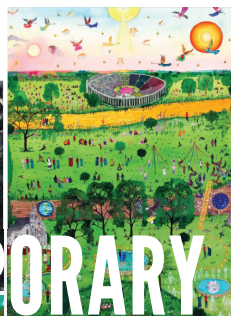


CALL FOR ENTRIES

CONTEMPORARY  
WATERCOLOUR  
COMPETITION



2016

The **ROYAL WATERCOLOUR SOCIETY**'s annual competition aims to encourage innovation and experimentation in all water-based media and provides a prestigious platform for both established and emerging artists. Works are selected by a distinguished panel of judges who work in diverse areas of the contemporary art world. They are seeking pieces which represent the most accomplished works in this field.

Successful entries are exhibited from 4 – 16 March 2016 at Bankside Gallery, situated next to Tate Modern, in the heart of London's cultural quarter.

### Judging Panel

Sam Cornish  
art critic & curator

Richard Selby  
director of The Redfern Gallery

Thomas Plunkett  
RWS President

Wendy Jacob  
RWS artist

### Competition prizes

Prizes will include:

David Gluck Memorial Award £1000  
RWS Exhibition Award  
A feature in *The Artist* magazine  
Heatherley's Prize - studio time  
Cash prizes  
Purchase prizes  
Art materials

**OPEN for ENTRIES**

Monday 19 October 2015

**DEADLINE**  
**MONDAY 18 JANUARY 2016**

How to apply:

All entries are submitted online at [www.royalwatercoloursociety.co.uk](http://www.royalwatercoloursociety.co.uk) where a maximum of 6 works may be uploaded.

£14 submission fee for one entry, with discounts on multiple submissions.

Royal Watercolour Society

Bankside Gallery | 48 Hopton Street | London SE1 9JH | 020 7928 7521 | [info@banksidegallery.com](mailto:info@banksidegallery.com)  
Open daily, 11am - 6pm | Free Admission | reverse shows previous successful entrants